



## Protect Your Spare Circuit Board Investment With PSSI® Products



Protective Circuit Board Cabinets ■ ESD Seating for Workbenches and Testing Stations ■ Static-Safe Workbenches  
Protective Circuit Board Cases and Transporters ■ Dock & Lock Storage System for Portable Computers

# complete static control

Effective static control must be an integrated process that provides protection during all phases of handling an ESD-sensitive device – packing, shipping, unpacking, testing, maintaining, and storing. PSSI® offers the largest, most complete line of static control systems for protective storage and prevention of ESD damage to sensitive electronic components, circuit boards, and magnetic media. Our products can easily be combined into complete integrated systems or utilized individually. Either way, you'll control expenses, lower investment, and improve quality of service.



## Circuit Board Carrying & Transport Cases

Lightweight, tough, stackable storage and shipping containers for delicate and sensitive circuit boards.

## Protective Storage Cabinets

Complete line of ESD/EMI/RFI protective cabinets for circuit board and magnetic media storage.

## Transporters

ESD-safe transporter for smooth and easy movement of sensitive electronic circuit boards and/or test equipment.

## Workbenches

Sturdy, versatile, static-free workbenches with full array of accessories to satisfy the toughest requirements.

## ESD Seating

Workplace chairs specifically designed for optimum static control, stress-free comfort, stability and maneuverability.

## Dock and Lock™ Systems

Secure storage cabinets for field-service technicians' portable computers. Individual lockable compartments connected to an internal wire management system for automated data transfer and battery recharging.

©1999, Plug-in Storage® Systems, Inc.

In our constant effort to improve our products, Plug-in Storage® Systems, Inc. reserves the right to change or modify features and specifications without notice. Plug-in Storage® and PSSI® are registered trademarks of Plug-in Storage® Systems, Incorporated. Dock & Lock™ is a registered trademark of Plug-in Storage® Systems, Inc., Softcell® is a registered trademark of GMT Inc., bimos™ is a registered trademark of Interstuhl Büromöbel GmbH & Co. KG, cab® is a registered trademark of Bausteine mbH

### Patents

Plug-in Storage®, Inc. (PSSI®) products are fully patent protected domestically and internationally. Patent information will be provided upon written request after review and approval of PSSI®.

## Table Of Contents

Protective Storage Cabinets	2-9
Dock & Lock™ Systems	10-11
Static-Safe Transporters	12-13
Protective Circuit Board Cases	14-16
Aluminum Carrying Cases	14
Aluminum Transport Cases	15
Conductive Containers	16
Static-Safe Workbenches	17-18
ESD-Protective/Industrial Seating	19-21

save  
your  
circuit  
boards

### Improve your quality of service and your bottom line.

Static electricity is ever present in the telecommunications workplace. It can be generated through even the simplest activities. A short walk across a carpet on a dry day can charge a person with up to 35,000 volts of static electricity. Merely getting up from a standard vinyl chair can generate a 5,000-volt charge. Static charges become a special concern in the workplace when they result in an electrostatic discharge (ESD) event.

Static-sensitive integrated circuits and other microelectronic components find ever-increasing applications in today's telecommunications and electronic products. Technological advances dramatically increase component density and significantly reduces power requirements, thereby increasing susceptibility to ESD events. Uncontrolled ESD causes intermittent and latent failures of micro-electronic components and circuit boards. Proper ESD control in the handling and storage of spare circuit boards will result in lower inventory investment, higher quality of service, increased profitability and market competitiveness. Response time is a critical factor in achieving higher quality of service. Protect your spare circuit boards from an inadvertent ESD event by storing them in static-safe PSSI Cabinets or Cases.

PSSI products are designed specifically to our customers' requirements. PSSI has more than 15 years of experience in providing the telecommunications industry with static-safe products. PSSI's protective storage cabinets, workbenches, transport cases and transporters provide a complete system for controlling ESD events. PSSI cabinets have two very unique features: an infinitely adjustable shelving system for high circuit board storage density and a convenient, built-in (optional) wriststrap tester and ground monitor (PWGM). PSSI cabinets are flexible for multiple-use applications, simplify inventory control, improve circuit board security, and are designed to fit standard equipment-bay footprints.

Similar attention to detailed requirements is evidenced in all our other protective products. You'll find all the protection you need in the following pages.



# protective storage cabinets

## Models 54-14\* & 54-21\*

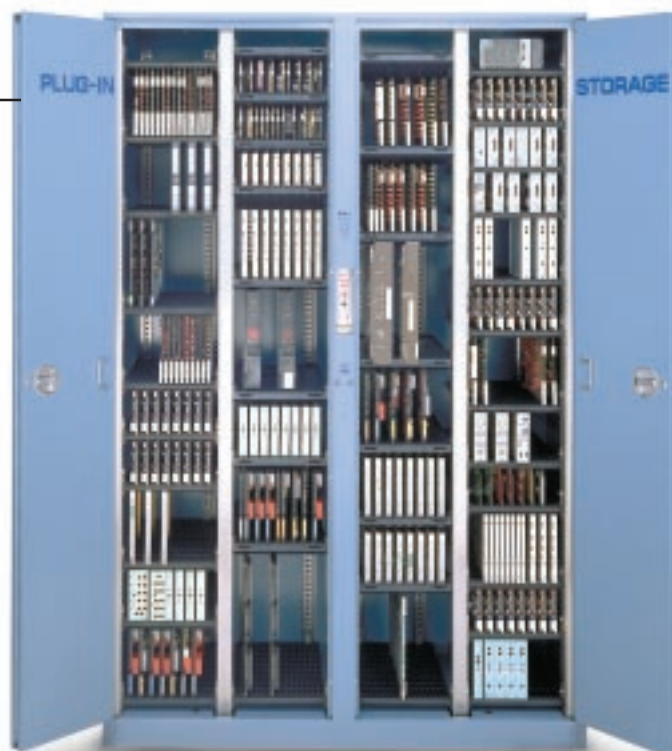
- High density storage for large quantities of circuit boards
- Easy access for inventory control and rapid bar code scanning
- Infinitely adjustable static dissipative shelves to accommodate multiple size and shape printed circuit boards
- Protection from theft, fire and unauthorized entry

PSSI Models 54-14 and 54-21 cabinets include these exclusive features:

- Multiple Central Office ground points
- Multiple wrist strap attachment points for simultaneous access
- Optional PWGM tester provides continuous wrist strap and ground monitoring
- Earthquake resistant design with optional frame
- Integrated levelers for easy, proper installation
- Three-point locking bi-fold doors for security and easy access protrude less than 12" (305 mm)

**Models 54-14 & 54-21** have two sections, which can be used independently for circuit board storage and other ESD-sensitive inventory. Model 54-14 can store circuit boards up to 10.25 inches (260 mm) deep; Model 54-21 can store circuit boards up to 18 inches (457 mm) deep. The 54-14 model is otherwise identical. Patented, infinitely adjustable, static-dissipative shelves enable high-density protective circuit board storage (refer to page 4). The 54 series cabinets are the ideal choice for digital switching, facility and private line offices, and major computer centers. Customizing accessories are available for storage of packaged circuit boards, computer tapes, data cartridges, disc packs, data printouts, and test equipment.

\*Patented



### Patented, Static-Dissipative Circuit Board Shelving

Static-dissipative shelving, mounted to stainless steel tracks, protects sensitive circuit boards from ESD by controlling the rate of electrical flow through each shelf to ground. Each shelf is constructed of a specially formulated static-dissipative polymer with a surface resistivity  $10^6$ - $10^9$  ohms per square. The grooved design on both the top and underside of each shelf allows for easy insertion and removal of circuit boards while providing safe, high-density circuit board storage. Shelves are infinitely adjustable to accept any circuit board height.



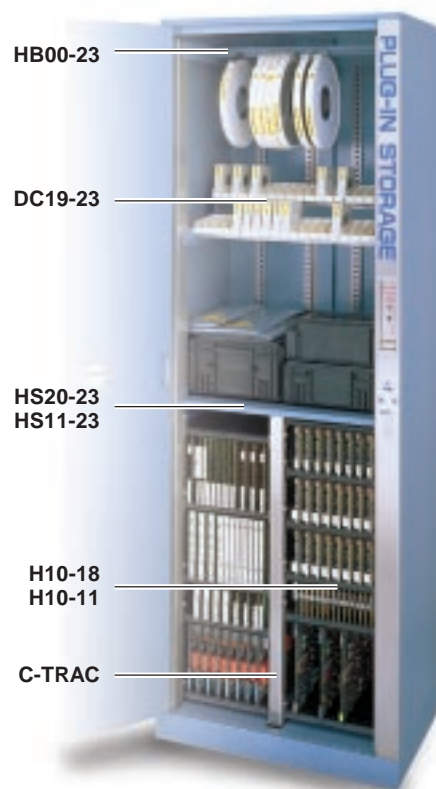
### PWGM Wrist Strap Tester/Monitor (optional)

To assure proper ESD procedures, an optional personnel wrist strap tester and monitor (PWGM) is available and can be built into each cabinet. Conveniently located in the cabinet centerpost, the PWGM easily verifies that a technician's wrist strap is making a proper ground and remains correctly connected. The PWGM can also be connected to the central ground system. The PWGM sounds an alarm if the technician's wrist strap inadvertently disconnects, or if the cabinet ground should disconnect from the central ground system.

## Customizing Accessories

For locations requiring additional secure storage of computer tapes, printouts, data cartridges, disc packs, power packs, test equipment, and/or boxed circuit boards, Model 54-14A and Model 54-21A cabinets can be equipped with the following customizing accessories, as indicated:

<b>HB00-23</b>	Hanger bar for magnetic 20 (max.) tapes or computer printouts (Model 54-21A only)
<b>DC19-23</b>	Double-tier storage shelf, 38 data cartridge chambers (Model 54-21A only)
<b>HS20-23</b>	Flat metal shelf for packaged circuit boards (Model 54-21A)
<b>HS11-23</b>	Flat metal shelf for packaged circuit boards (Model 54-14A)
<b>H10-18</b>	Static dissipative circuit board shelf (Model 54-21A)
<b>H10-11</b>	Static dissipative circuit board shelf (Model 54-14A)
<b>C-TRAC</b>	Stainless steel center support track for dissipative shelving
<b>PWGM</b>	Wrist strap tester and ground-point monitor (refer to page 2)



## Specifications: Models 54-14 & 54-21

<b>Construction:</b>	Cabinet and doors 14-gauge welded steel construction
<b>Finish:</b>	Textured, fire-resistant paint; standard colors blue, gray, or beige; custom colors available
<b>Dimensions:</b>	
Model 54-14	82" H x 54" W x 14" D (2083 mm H x 1372 mm W x 356 mm D)
Model 54-21	82" H x 54" W x 21.75" D (2083 mm H x 1372 mm W x 552 mm D)
<b>Doors:</b>	Two reinforced bi-fold doors, tamper-resistant 3-point contact lock, doors protrude less than 12" (305 mm) when open
<b>Shelving Tracks:</b>	Stainless steel shelving tracks provide a uniform, conductive and corrosion-resistant path to ground
<b>Grounding:</b>	4 strategic ground points located at the back corners to connect directly to central office ground system; multiple wrist strap ground point receptacles; built-in PWGM tester/ ground monitor (optional)
<b>Installation Features:</b>	Knockouts for installation in existing equipment lineup or wall mounting, side-by-side or back-to-back; cutouts at bottom for securing to raised-floor locations (can be insulated from floor); 4 built-in levelers for floor variation compensation
<b>Storage Capacity:</b>	Refer to Capacity Chart for 54 Series cabinet page 4

### Shelving:

- For un-packaged circuit boards: Special injection molded polymer compound for permanently static-dissipative surface resistivity range of  $10^6$ - $10^9$  ohms per square; 30 shelves furnished.  
Model H10-11 (10" W x 11" D) for 54-14;  
Model H10-18 (10" W x 18" D) for 54-21
- For packaged circuit boards: Static dissipative flat metal: 16-gauge steel with textured static-dissipative paint.  
Model HS11-23 for 54-14A;  
Model HS20-23 for 54-21A



*Cabinets are flexible in design and can store a wide range of circuit boards.*

## Models 54-14 & 54-21 (continued)

### Circuit Board Capacity Chart for Model 54 Series Cabinets

Horizontal Shelves for 1 Compartment 4 Compartments Per Cabinet			Vertical Circuit Board Storage Per Chamber	
Circuit Board Height (Inches)	Total Shelves Required	Total Vertical Chambers	Circuit Board Width Inches	Boards Per Chamber
2.0	27	26	1/4	16
2.5	23	22	3/8	16
3.0	20	19	1/2	16
3.5	18	17	5/8	16
4.0	16	15	3/4	13
4.5	15	14	7/8	11
5.0	14	13	1	10
5.5	13	12	1-1/8	8
6.0	12	11	1-1/4	8
6.5	11	10	1-3/8	7
7.0	10	9	1-1/2	6
7.5	10	9	1-5/8	6
8.0	9	8	1-3/4	5
8.5	9	8	1-7/8	5
9.0	8	7	2	5
9.5	8	7	2-1/8	4
10.0	8	7	2-1/4	4
10.5	7	6	2-3/8	4
11.0	7	6	2-1/2	3
11.5	7	6	2-5/8	3
12.0	6	5	2-3/4	3
To			2-7/8	3
14.5			3	3
15.0	5	4	3-1/8	3
To			3-1/4	3
18.0			3-3/8	2
Horizontal Shelf Formula 77" ÷ Height of Board + .875 = Number of Shelves required.			Vertical Storage Formula 10" ÷ Width of Board = Number per chamber.	

#### Notes:

- Horizontal shelf formula: ROUND UP to nearest half or whole number.
- Vertical shelf formula: ROUND UP to nearest fraction.
- For TOTAL storage capacity by compartment: Multiply the vertical chambers by the number of boards per chamber.
- Circuit board storage calculations are within + or -10%.
- Model 54-14 for circuit boards up to 10-1/4" in length.  
Model 54-21 for circuit boards up to 18" in length.
- MAXIMUM vertical circuit board storage: 16 circuit boards per chamber.

# protective storage cabinets

## Model 28-21\*

- High density storage for large quantities of circuit boards
- Easy access for inventory control and rapid bar code scanning
- Infinitely adjustable static dissipative shelves to accommodate multiple size and shape printed circuit boards
- Protection from theft, fire and unauthorized entry

PSSI Model 28-21 cabinets include these exclusive features:

- Multiple Central Office ground points
- Multiple wrist strap attachment points for simultaneous access
- Optional PWGM tester provides continuous wrist strap and ground monitoring
- Earthquake resistant design with optional frame
- Integrated levelers for easy, proper installation
- Three-point locking bi-fold doors for security and easy access protrude less than 12" (305 mm).

**The Model 28-21** cabinet is designed for digital switching, facilities, private line offices, and major computer data centers where spare board storage space is at a premium. Model 28-21 consists of a single cabinet with two compartments, each of which can be used independently or custom configured. Patented, infinitely adjustable, static-dissipative circuit board shelving (refer to page 4) facilitates high density, protective storage of circuit boards up to 18 inches (457 mm) deep. A full range of customizing accessories is available for custom configurations.

\*Patented



Model 28-21A

## Customizing Accessories

The following accessories are available for custom configurations of Model 28-21A cabinet:

<b>HB00-23</b>	Hanger bar for 20 (max.) magnetic tapes or computer printouts
<b>DC19-23</b>	Double-tier storage shelf, 38 data cartridge chambers
<b>PWGM</b>	Wrist strap tester and ground point monitor (refer to page 2)
<b>HS20-23</b>	Static dissipative flat metal shelf for packaged circuit boards
<b>H10-18</b>	Static-dissipative circuit board shelf
<b>C-TRAC</b>	Stainless steel center support track for dissipative shelving
<b>PWGM</b>	Wrist strap tester and ground-point monitor (refer to page 2)

## Specifications: Model 28-21

<b>Construction:</b>	Cabinet and doors 14-gauge welded steel construction
<b>Finish:</b>	Textured, fire-resistant paint; standard colors blue, gray, or beige; custom colors available
<b>Dimensions:</b>	82" H x 28" W x 21.75" D (2083 mm H x 711 mm W x 552 mm D)
<b>Door:</b>	Reversible, bi-fold, tamper-proof with 3-point contact lock; protrudes less than 12" (305 mm) when open
<b>Grounding:</b>	4 strategic ground points located at back corners to connect to central office ground system; multiple wrist strap ground point receptacles; optional built-in PWGM tester/ ground monitor available.

### Shelving:

#### For un-packaged circuit boards

Special injection molded polymer compound for permanently static-dissipative surface resistivity range of  $10^6$ - $10^9$  ohms per square; 15 shelves (H10-18) furnished with cabinet depending on circuit board dimensions

#### For packaged circuit boards

Static dissipation flat metal: 16-gauge steel with textured static-dissipative paint.

Model HS20-23 for 28-21A

### Installation Features:

Knockouts for installation in existing equipment lineup or wall mounting, side-by-side or back-to-back; bottom cutouts for anchoring to raised floor locations (can be insulated from floor); 4 built-in levelers compensate for floor variations.



# protective storage cabinets

## Models 50-14\* & 50-21\*

- Heavy-duty cabinet and doors of 18-gauge welded steel construction
- Adjustable flat metal shelving for ESD protective-packaged circuit boards
- Single latch, locking doors on heavy gauge steel hinges
- Protection from theft, fire and unauthorized entry
- Four convenient ground points for connection to central office ground
- Multiple wrist strap and ground point receptacles
- Shelf dividers for vertical product package orientation (optional)
- Integral levelers, knockouts, and cutouts for easier installation

### Models 50-14 and 50-21

cabinets provide secure and efficient storage for protective-packaged circuit boards and magnetic media. The 50 series cabinet is specifically designed for 5-ESS and DMS switching sites.

Customized accessories are available for storage of computer tapes, printouts, data cartridges, and disc packs. PSSI's protective cabinets provide high density packaged circuit board security, quick and efficient bar-code inventory scanning, and a static-safe storage environment.

*\*Patented*



Model 50-21A

## Customizing Accessories

The following accessories are available for custom configurations of Models 50-21A and 50-14A cabinets:

<b>HS13-23</b>	Flat metal shelf for packaged circuit boards (50-14A)
<b>HS19-23</b>	Flat metal shelf for packaged circuit boards (50-21A)
<b>H10-11</b>	Polymer shelf for unpackaged circuit boards (50-14A)
<b>H10-18</b>	Polymer shelf for unpackaged circuit boards (50-21A)
<b>HB00-23</b>	Hanger bar for 20 (max.) magnetic tapes or computer printouts
<b>DS19-23</b>	Data cartridge shelf, double-tier storage 38 chambers (50-21A)
<b>C-TRAC</b>	Stainless steel center support track for polymer shelving
<b>PWGM</b>	Wrist strap tester and ground continuity monitor (refer to page 2)

## Specifications: Model 28-21

<b>Construction:</b>	Cabinet and doors 18-gauge welded steel construction
<b>Finish:</b>	Textured, fire-resistant paint; standard colors blue, gray, or beige; custom colors available
<b>Dimensions:</b>	Designed for 6 foot (1829 mm) central office
Model 50-14	72" H x 50" W x 14" D (1829 mm x 1270 mm x 356 mm)
Model 50-21	72" H x 50" W x 21" D (1829 mm x 1270 mm x 533 mm)
<b>Door:</b>	Two reinforced doors with quick-release hinges; flush mount door latch with key-type lock
<b>Grounding:</b>	4 strategic ground points located at back corners to connect to central office ground system; multiple wrist strap ground point receptacles; optional built-in PWGM tester/ground monitor available.

### Installation Features:

Knockouts for installation in existing equipment lineup or wall mounting, side-by-side or back-to-back; bottom cutouts for anchoring to raised floor locations (can be insulated from floor); 4 built-in levelers compensate for floor variations.

### Shelving:

For packaged circuit boards: Flat metal; 18-gauge steel with textured static-dissipative paint

For unpackaged circuit boards: Special injection molded polymer compound for permanently static-dissipative surface resistivity range of  $10^6$ - $10^9$  ohms per square



# protective storage cabinets

## Models 36-72 & 36-82 48-72 & 48-82

- Heavy-duty cabinet and doors of 18-gauge welded steel construction
- Adjustable flat metal shelving for ESD protective-packaged circuit boards
- Single latch doors with internal quick-release hinges
- Protection from theft, fire and unauthorized entry
- Four convenient ground points for connection to central office ground system
- Multiple wrist strap and ground point receptacles
- Vertical shelf dividers (optional) for product organization or classification
- Integral levelers, knockouts, and cutouts for easier installation

**Models 36-72, 36-82, 48-72 and 48-82** cabinets provide secure and efficient storage for protective-packaged circuit boards and magnetic media.

Textured static-dissipative paint is applied to the shelving for additional ESD protection.

Customized accessories are available for storage of computer tapes, printouts, data cartridges, and disc packs. PSSI's protective cabinets provide high density packaged circuit board security, quick and efficient bar-code inventory scanning, and a static-safe storage environment.



Model 48-72



Model 36-72

## Customizing Accessories

The following accessories are available for custom configurations of Models 36-72, 36-82, 48-72 and 48-82 cabinets:

<b>HS35-23</b>	Flat metal shelf for packaged circuit boards (36-72 & 36-82)
<b>HS17-23</b>	Flat metal half-shelf for packaged circuit boards (36-72 & 36-82)
<b>HS47-23</b>	Flat metal shelf for packaged circuit boards (48-72 & 48-82)
<b>HS23-23</b>	Flat metal half-shelf for packaged circuit boards (48-72 & 48-82)
<b>C-TRAC</b>	Stainless steel center support track for half shelf
<b>PWGM</b>	Wrist strap tester and ground continuity monitor (refer to page 2)

## Specifications: Models 36-72, 36-82, 48-72 & 48-82

<b>Construction:</b>	Cabinet and doors 16-gauge welded steel construction	<b>Installation Features:</b>	Knockouts for installation in existing equipment lineup or wall mounting, side-by-side or back-to-back; bottom cutouts for anchoring to raised floor locations (can be insulated from floor); 4 built-in levelers compensate for floor variations.
<b>Finish:</b>	Textured, fire-resistant paint; standard colors blue, gray, or beige; custom colors available	<b>Shelving:</b>	For packaged circuit boards; flat metal; 18-gauge steel with textured static-dissipative paint
<b>Dimensions:</b>	<p>Model 36-72 36" W x 72" H x 24" D (914 mm x 1829 mm x 610 mm)</p> <p>Model 36-82 36" W x 82" H x 24" D (914 mm x 2083 mm x 610 mm)</p> <p>Model 48-72 48" W x 72" H x 24" D (1219 mm x 1829 mm x 610 mm)</p> <p>Model 48-82 48" W x 82" H x 24" D (1219 mm x 2083 mm x 610 mm)</p>		
<b>Door:</b>	Two reinforced doors with quick-release hinges; flush mount door latch with key-type lock		
<b>Grounding:</b>	4 strategic ground points located at back corners to connect to central office ground system; multiple wrist strap ground point receptacles; optional built-in PWGM tester/ground monitor available.		

# protective storage cabinets

## Model 40-25\* Mini Mobile Work Station/Cabinet

- Cabinet and doors 16-gauge welded steel construction
- Patented, vertical-grooved track, polymer static-dissipative shelves for high-density storage
- Stainless steel shelving tracks for optimum ground path and infinite adjustability
- Two reinforced doors with key-type lock and quick-release interior hinges
- Protection from theft, fire and unauthorized entry
- Handy exterior work shelves for test equipment, documents and maintenance supplies
- Two coiled ground cords for easy connection to adjacent ground point
- Four wrist strap ground-point receptacles
- Static-dissipative laminate work surface (reversible)
- Four conductive swivel casters; two casters lockable

**Model 40-25** is the ideal unit for storing, transporting, testing, cleaning, repairing, and routine maintenance of ESD-sensitive components and circuit boards. It is designed to help users maintain high quality service at small communications sites, customer locations, and small switching systems. It consists of one basic storage cabinet with two compartments for transport and storage of virtually any size circuit board. The top work surface consists of reversible, permanently static-dissipative laminate. Four conductive casters enable mobility while maintaining static protection. In addition to two protective circuit board storage compartments, the Model 40-25 also features several convenient exterior shelves for technician's packaging materials, maintenance supplies, tools, test equipment and manuals.

\*Patented



Model 40-25



Rear View Showing convenient storage shelving

### Specifications: Model 40-25

<b>Construction:</b>	Cabinet and doors 16-gauge welded steel construction	<b>Load Capacity:</b>	500 lb. (227 kg)
<b>Finish:</b>	Textured, fire-resistant blue, gray, or beige paint; custom colors available	<b>Grounding:</b>	2 coiled ground cords; each with 1 Megohm resistor, banana plug, and alligator clip for connection to any suitable ground; 4 wrist strap ground point receptacles
<b>Dimensions:</b>	40" H x 24.25" W x 25" D (1016 mm H x 616 mm W x 635 mm D)	<b>Shelving:</b>	For un-packaged circuit boards; special injection molded polymer compound for permanently static-dissipative surface resistivity range of $10^6$ - $10^9$ ohms per square; 10 shelves furnished for circuit boards up to 18" (457 mm) in length; optional H18-22 flat metal shelves
<b>Doors:</b>	(2) 12" (305 mm) doors with key-type lock; internal quick-release hinges	<b>Storage Capacity:</b>	Any height and width circuit board; stores approximately 220 circuit boards 4" (102 mm) high by 5/8" (18.8 mm) wide
<b>Work Surface:</b>	Reversible, permanently static-dissipative laminate		
<b>Exterior Shelves:</b>	Side and rear storage areas for packaging, cleaning materials and manuals; top rear shelf is fabricated of chemical-resistant stainless steel		
<b>Casters:</b>	Four conductive 4" (102 mm) casters; rear casters dual-locking		

# protective storage cabinets

## Mini Cabinet Models 34-14\* & 34-22\*

- Cabinet and doors 16-gauge, welded steel construction
- Stainless steel shelving tracks for optimum ground path and infinite adjustability
- Patented, vertical-grooved track, polymer static-dissipative shelves for high-density storage
- Easy access for inventory control and bar code scanning
- Two reinforced doors with key-type lock; quick-release interior hinges
- Protection from theft, fire and unauthorized entry
- Ground cable (6 gauge) for easy connection to central ground system
- Four wrist strap ground point receptacles
- Slots and knockouts for easy equipment rack or wall installation

**Model 34-14 and 34-22** mini-cabinets are designed for protective circuit board storage at locations where floor space is at a premium. Typical applications include remote locations, mobile phone cells, fiber optic and radio repeater sites, small switching systems, and customer premises. Both models are wall or equipment bay mountable. These mini-cabinets contain two independent compartments, each with patented, infinitely adjustable, static-dissipative shelves. Model 34-14 can accommodate circuit boards up to 10.25" (260 mm) deep; Model 34-22, circuit boards up to 18" (457 mm) deep. Flat metal shelves may also be installed in the 34-22 (HS18-22) in place of circuit board shelves.

*\*Patented*



34-14  
Mini-Cabinet

34-22  
Mini-Cabinet

## Specifications: Models 34-14 & 34-22

<b>Construction:</b>	Cabinet and doors 16-gauge welded steel construction
<b>Finish:</b>	Textured, fire-resistant blue, gray, or beige paint; custom colors available
<b>Dimensions:</b>	
Model 34-14	34" high, 24.25" front width, 21.375" rear width, 14" deep (864 mm high, 616 mm front width, 543 mm rear width, 356 mm deep)
Model 34-22	Same as Model 34-14, except depth is 22" (559 mm)
<b>Doors:</b>	Two 16 gauge reinforced 12" doors with key-type lock
<b>Grounding:</b>	One 6-gauge ground cable for easy connection to central office ground systems; 4 wrist strap ground-point receptacles

### Installation Features:

Slots and knockouts for easy mounting to existing 23" (584 mm) equipment bay racks or for wall mounting; (Model 34-14 not designed as free-standing unit; Model 34-22 can be mounted under PSSI WS70 Series workbench)

### Shelving:

For un-packaged circuit boards; special injection molded polymer compound for permanently static-dissipative surface resistivity range of  $10^6$ - $10^9$  ohms per square; 10 shelves furnished (H10-11 for model 34-14; H10-18 for Model 34-22) optional H18-22 flat metal shelves (Model 34-22)

### Storage Capacity:

Any height or width circuit board; approximately 220 circuit boards 4" (102 mm) high by 0.625" (15.8 mm) wide



# Dock and Lock<sup>TM</sup> systems

## Models 3225\* & 1625\*

- Centralized docking station for field-service technicians' portable computers and test equipment
- Each drawer is equipped with a data-comm line to a convenient punch-down block providing for a quick and easy data connection
- A shelf and AC outlet (110 volt) behind each drawer to accommodate the battery charger. Two outlets per drawer optional
- Articulated wire management system on each drawer minimizes chafing and tangled wires while extending wire service life
- Engineered ventilation system (patent pending) promotes air circulation to dissipate heat without a fan

**Models 3225 and 1625** provide convenient, secure, and connected storage for portable computers and test equipment. Model 3225 is a 6-drawer unit; Model 1625, a 3-drawer unit. Each drawer provides storage space for one portable data terminal, easy access RJ-25 data-comm jack, and electrical AC power receptacles for battery charging. The Dock & Lock System provides corporate management with a centralized, off-hours data distribution capability. Overnight and over-the-weekend storage of data terminals simplifies software upgrades, routine file and hard drive maintenance, daily battery recharging and periodic deep-cycle battery maintenance. Field service technician's work orders and related service reports can be uploaded at the end of each day. The next day's work orders and related service information can be downloaded through the data communications connection while each portable computer's battery is being recharged. Each drawer is equipped with an individual key activated lock. A master key is provided for management.

*\*Patent pending*



*Model 3225 on optional 2006 stand.*



*Model 1625 on optional 2003 stand.*



*All Dock & Lock cabinets can be stacked two high. As illustrated on optional: Stand Model 1203 for Models 1625 and Stand Model 1206 for Model 3225*

*Dock & Lock provides secure "connected" storage for portable computers and test equipment.*



*Articulated arm routes power and data cables to interior of storage drawer*

*Unique Dock & Lock cable management system*



*DC Battery Charger Shelf*



*Three-drawer Dock & Lock mounted on relay rack using Model EBB-19 Equipment Bay Mounting Kit*



*Model 1625-2 with two extra-deep drawers for larger computer and test equipment on optional 2003 stand*



*Dock & Lock™ can easily be moved from one area to another when combined with a Model 1525 mobile base shown with model ESDK Central Office upgrade*

## Specifications: Models 3225 and 1625

<b>Construction:</b>	16-gauge welded steel
<b>Ventilation:</b>	Engineered louvered ventilation system (patent pending) for optimum cooling (no fan required)
<b>Color:</b>	Standard: Beige; custom colors available
<b>Security:</b>	Individual key locks on each drawer; master key for operations management
<b>Drawers:</b>	Sturdy, full-width pull handle and heavy-duty telescopic drawer slides with precision ball bearings. All standard drawer dimensions: 20.25" (514 mm) L x 13.25" (339 mm) W
Standard Models	1625: 3 drawers 5.50" (140 mm) deep 3225: 6 drawers 5.50" (140 mm) deep
Optional Models	1625-2: 2 drawers 8.50" (216 mm) deep 3225-4: 4 drawers 8.50" (216 mm) deep
<b>Electrical Power:</b>	Custom designed internal power center provides one grounded, polarized 15 amp, 110 volt AC electrical outlet for each computer's external battery charging power supply. Each cabinet equipped with one 8-foot power cord. All electrical components UL approved.
<b>Data Communications:</b>	Each drawer equipped with RJ 25 telephone jack; individual six-wire line to a convenient punch-down block; custom data-comm jacks and wiring options available

### Cabinet Dimensions

#### Standard Models:

1625	(3-drawer cabinet) 16.25" W x 22.75" H x 25.00" D (413mm W x 578 H x 635mm D)
3225	(6-drawer cabinet) 32.00" W x 22.75" H x 25.00" D (813mm W x 578mm H x 635mm D)

#### Optional Models:

1625-2	(2-drawer cabinet) 16.25" W x 22.75" H x 25.00" D (413mm W x 578 H x 635mm D)
3225-4	(4-drawer cabinet) 32.00" W x 22.75" H x 25.00" D (813mm W x 578mm H x 635mm D)

### Optional Stand Dimensions

<b>Model 2006:</b>	(4 or 6 drawer single) 32.00" W x 19.25" H x 25.00" D (Single 3225) (813 mm W x 488 mm H x 635 mm D)
<b>Model 1206:</b>	(4 or 6 drawer stack) 32.00" W x 12.00" H x 25.00" D (Stacked 3225) (813 mm W x 305 mm H x 635 mm D)
<b>Model 2003:</b>	(2 or 3 drawer single) 16.25" W x 19.25" H x 25.00" D (Single 1625) (413 mm W x 488 mm H x 635 mm D)
<b>Model 1203:</b>	(2 or 3 drawer stack) 16.25" W x 12.00" H x 25.00" D (Stacked 1625) (413 mm W x 305 mm H x 635 mm D)
<b>Model 1525:</b>	Mobile Base. 16.25" W x 18.00" H x 25.00" D (413 mm W x 457 mm H x 635 mm D)

**Model ESDK:** Central Office ESD upgrade

# static - safe transporters

## Model 19-31\* & 19-31 CPQ\*

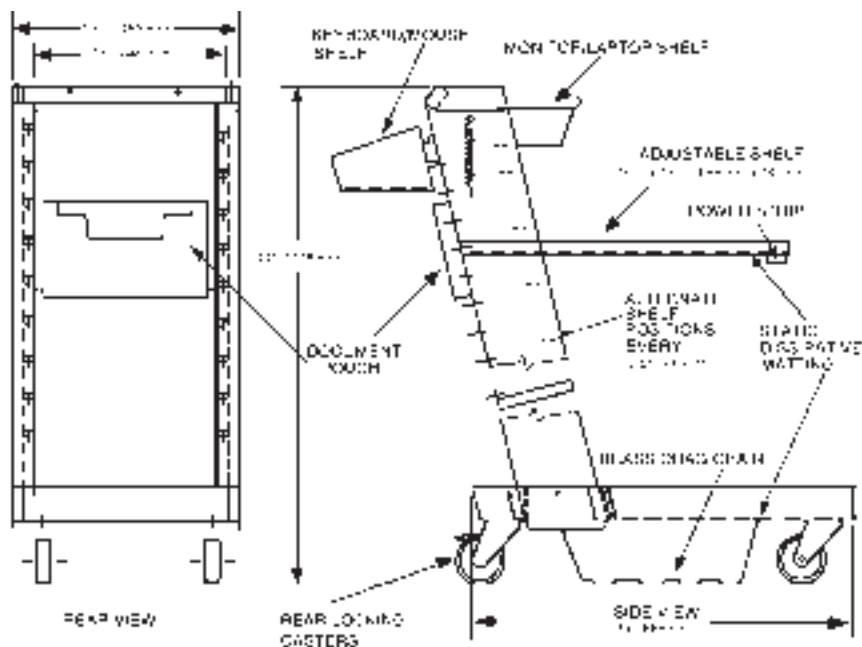
- Heavy gauge steel and stainless steel construction
- Optimum maneuverability via four conductive swivel casters; rear casters lockable
- Brass drag chain to ensure a constant direct ground path
- Two equipment coiled ground cords, each with 1-megohm resistors and alligator clips
- Two personnel wrist strap ground point receptacles
- Adjustable steel shelf with static-dissipative matting
- A convenient and adjustable document pouch (optional)



Model 19-31

The static-safe transporter is designed for ESD-safe movement of static-sensitive circuit boards. It can also serve as a mobile workbench for electronic test equipment. The transporter's slim profile design permits easy passage in narrow aisles. Smooth transport and full maneuverability provided by four conductive swivel casters. The rear casters are lockable for safety. Two coiled ground cords with one-megohm resistors provide connection to ground where a conductive or dissipative floor is not available. Two wrist strap ground points and two equipment ground points are provided.

\*Patented







*Perfect for transporting  
your PC. Model 19-31 CPQ*



*A great way to move printed  
circuit board storage bins.  
Model 19-31*

## Specifications: Models 19-31 & 19-31 CPQ

<b>Construction:</b>	Heavy gauge steel and stainless steel
<b>Finish:</b>	Textured, fire-resistant black paint
<b>Dimensions:</b>	44" H x 19.5" W x 35" L (1118 mm H x 495 mm W x 889 mm L)
<b>Handle:</b>	Stainless steel with two wrist-strap ground-point receptacles
<b>Casters:</b>	Four, 4" (102 mm) conductive casters; rear casters lockable (both wheel and swivel)
<b>Shelf:</b>	Adjustable, steel, with protective static- dissipative mat; 27.5" (699 mm) L x 17.5" (445 mm) W; 75 lb. (34 kg) load capacity; additional shelves optional
<b>Grounding:</b>	Brass drag chain; two coiled grounding cords, each with 1 megohm resistor, banana plug and alligator clip; conduc- tive casters

### Standard Accessories (For Model 19-31 CPQ):

Model Number PS4-15 power strip with 15-ft  
(2572 mm) power cord, surge suppressor,  
and 15-amp circuit breaker

#### Model Number MS:

Shelf for monitor or laptop

#### Model Number KM:

Shelf for keyboard & mouse pad

#### Model Number MT:

Mini-tower mounting brackets

### Optional accessories for both models

#### Model Number DP:

Document pouch

#### Model Number BH:

Book stand holder

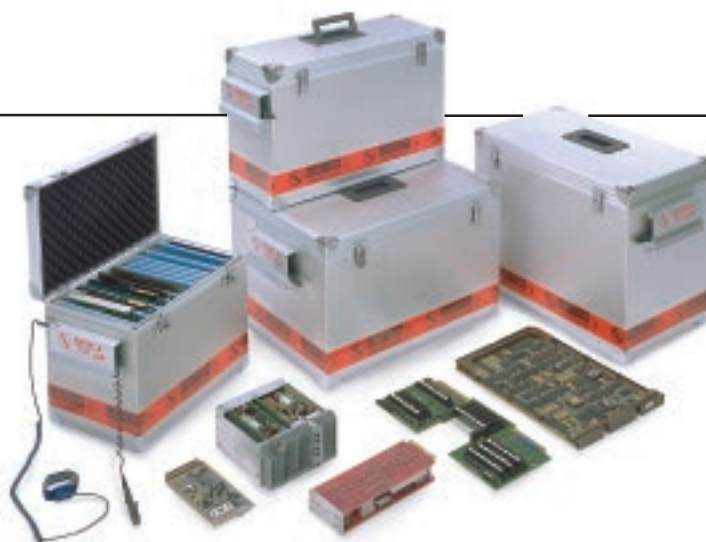
# protective circuit board cases

## Aluminum Carrying Cases

- Conductive aluminum case shields contents from ESD and external contaminants
- Flexible Softcell® dividers easily accommodates various circuit board dimensions
- Convenient, retractable ground cords built in to each side handle
- Two convenient ground point receptacles for wrist strap coil cords
- Built-in exterior interlocks for stacking
- Self-aligning latches with tamper-proof locks
- Custom sizes and configurations available

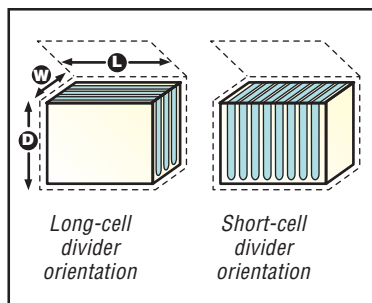
### Carrying Cases are Ideally Designed for Outside Plant, Maintenance and Service Calls

Static-sensitive circuit boards can be safely carried and stored in PSSI carrying cases. These cases simplify board handling, increase productivity, and reduce packing material costs and their environmental impact. By carrying all your circuit boards in one case, they are always available for replacement and inventory control, thus eliminating fumbling and leaving a free hand for safety. Circuit boards are insulated from the conductive outer surface of the case by static-dissipative hanging dividers or fixed-cell panels. Additional ESD and impact protection is provided by conductive 3/8" (9.5 mm) foam padding on interior flat surfaces. PSSI carrying cases are offered in five standard sizes. Custom carrying cases are available in any size with various types of adjustable and fixed divide systems.



### PIC Case and Wrist Strap Grounding

Coiled ground cords are conveniently accessible (and retractable) from either side handle. Each cord is equipped with a durable banana-plug alligator clip. Convenient wrist strap ground point receptacles are included on each side handle.



### Softcell® Dividers

Circuit boards are cradled and protected by individual, static-dissipative Softcell dividers. These tough, low-density polyethylene dividers easily conform to a wide range of circuit board thicknesses. Circuit boards up to 14" (356 mm) by 19" (483 mm) can be accommodated.

## Aluminum Carrying Cases

Case Model No.	Outside Diameter L x W x D Inches (Millimeters)	Divider System Model No.	Softcell Divider options	Inside Cell Dimensions L x W - Inches (Millimeters)
AC08-13	24 x 08 x 13 (610 x 203 x 330)	DS20-11-06L or, DS06-11-12S	(6) long compartments (12) short compartments	19 x 11 (403 x 279) 6 x 11 (152 x 279)
AC10-12	15 x 12 x 10 (381 x 305 x 254)	DS08-09-10S or, DS13-09-10L	(10) short compartments (10) long compartments	8 x 9 (203 x 229) 13 x 9 (330 x 229)
AC12-14	24 x 14 x 12 (610 x 356 x 305)	DS 20-12-10L or, DS 11-12-20S	(10) long compartments (20) short compartments	19 x 12 (483 x 305) 10 x 12 (254 x 305)
AC15-13	24 x 15 x 13 (610 x 381 x 330)	DS14-11-10S or, DS14-11-10S	(10) short compartments (10) short compartments	14 x 11 (356 x 279) 14 x 11 (356 x 279)
AC12-16	24 x 12 x 16 (610 x 305 x 406)	DS20-14-10L or, DS11-14-20S	(10) long compartments (20) short compartments	19 x 14 (483 x 356) 10 x 14 (254 x 356)

# protective circuit board cases

## Aluminum Transport Cases

- Conductive aluminum case shields contents from ESD and external contaminants
- Fixed-cell, static-dissipative polymer dividers, adjustable to various circuit board dimensions
- Convenient, built-in Field Service Kit for international customs contents verification (optional)
- Two convenient ground point receptacles for wrist strap coil cords
- Durable design to withstand years of high international shipping cycles
- Self-aligning lockable latches
- Equipment bay mountable
- Custom sizes and configurations available

A sensitive electronic circuit board confronts its ultimate test of survivability when it arrives at an international port-of-entry custom's control office. The PSSI Transport Case is designed to not only protect sensitive circuit boards in transit, but also during those dreaded, often careless customs inspections.

Static-sensitive circuit boards can now be safely shipped to domestic and international destinations. Just inside the outer cover of the case is a Field Service Kit and your guidelines for proper handling procedures. If customs agents must examine the contents of your ESD-sensitive circuit board shipment, they now have all the necessary procedures and accessories to safely conduct their examination. Additional ESD and shock protection is provided by conductive 3/8" (9.5 mm) foam padding on interior flat surfaces. PSSI transport cases are offered in two standard sizes. Custom interior configuration and sizes are also available.

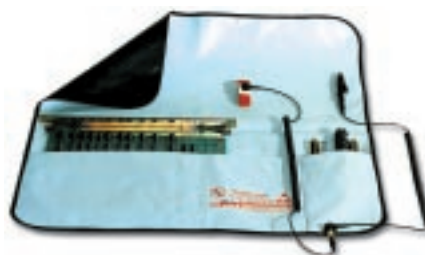


## PSSI Aluminum Transport Cases Sizes

Transport Case Model No.	Outside Dimensions L x W x D Inches (Millimeters)	Option Part No.	Interior Option(s) Description
AT16-16	25 x 16 x 16 (635 x 406 x 406)	VC6403/300	cab® divider system
		IC2415	Cover inside (International shipping)
		SDFS-01	Field Service kit
		RMF09	Rack mount flanges
AT16-18	25 x 16 x 18 (635 x 406 x 457)	VC6403/300	cab® divider system
		IC2415	Cover inside (International shipping)
		SDFS-01	Field Service kit
		RMF09	Rack mount flanges

## Field Service Kit, Model SDFS-01

Model SDFS-01 enables repair or replacement of sensitive circuit boards at locations where static-safe work areas are inconvenient or unavailable. The kit contains a 2-foot (610 mm)



square static-dissipative mat which has an 18" (457 mm) wide circuit board pocket and a 4-3/4" (121 mm) wide accessory pocket for ground cord, wrist strap, and tools. The inner material dissipates static electrical charges through the coiled cord with alligator clip to ground. A convenient common ground receptacle is provided for connecting both grounding and wrist strap cords. The Field Service Kit is manufactured of durable materials that meet all conductivity and static decay specifications of MIL-B-81705B and NFPA #56A.

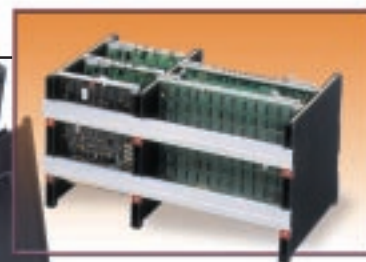


# protective circuit board cases

## Conductive Containers Model CC Series

- Durable, light-weight, returnable/reusable circuit board cases
- Ideal for work-in-process, storage, and distribution applications
- Molded conductive polypropylene construction
- Stackable and compatible with international Euro-pallet
- Flat bottom for automated conveyor systems
- Available with an adjustable, semi-rigid cell divider system, or Softcell® dividers
- Label positions molded on sides

**Model CC Series** containers protect sensitive circuit boards during in-house transport, storage, and handling. They are constructed of conductive polypropylene for static control and durability and are suitable for manual and automated material handling. Containers are stackable, with or without covers, and their modular design allows stacking of two small containers on one larger unit. They come in a variety of sizes (see table), and are available with or without adjustable cab® PCB divider system or Softcell® dividers.



*cab® Divider System*

## Softcell® Static-Dissipative Divider Cells (Refer to page 14)

Softcell® dividers are available for any Model CC Series container with special order of ten or more.

## Standard Sizes

Standard sizes are listed in the chart below. To select a specific model for your application, refer to the top section of the chart for the series that fits your length and width requirements; then, refer to the lower section to select a model of that series that fits your height requirements.

## Container Covers

**Model CC4300**  
for all CC43 Series containers

**Model CC6400**  
for all CC64 Series containers

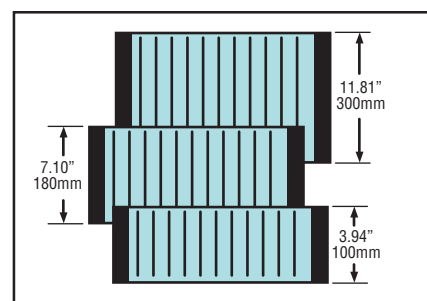
## cab® Divider System

Available in three depth sizes and adjustable for multiple compartments:

**Model CC4303/100**  
for container models CC 4313, 6413, and 6415 (3.94" depth)

**Model CC6403/180**  
for container models CC 4320, 6240, and 6425 (7.10" depth)

**Model VC6403/300**  
for container models CC 6441 (11.81" depth)



## Conductive Containers

Container Model Number	Outside Dimensions L x W x D Inches (Millimeters)	Inside Dimensions L x W x D Inches (Millimeters)	cab® Divider System Model Number	Inside Divider Dimensions* L x W x D Inches (Millimeters)
CC4313	16 x 12 x 5 (406 x 305 x 127)	13.9 x 10.0 x 5.0 (354 x 254 x 127)	VC4303/100	12.53 x 8.51 x 3.94 (318 x 216 x 100)
CC4320	16 x 12 x 9 (406 x 305 x 127)	13.9 x 10.0 x 7.8 (353 x 254 x 198)	VC4303/180	12.53 x 8.51 x 7.10 (318 x 216 x 180)
CC6413	24 x 16 x 5 (610 x 406 x 127)	22.3 x 14.5 x 4.6 (567 x 366 x 117)	VC4303/100	20.95 x 13.00 x 3.94 (532 x 356 x 100)
CC6415	24 x 16 x 7 (406 x 406 x 178)	22.3 x 14.5 x 5.6 (567 x 366 x 142)	VC4303/100	20.95 x 13.00 x 3.94 (532 x 356 x 100)
CC6420	24 x 16 x 9 (610 x 406 x 229)	22.3 x 14.5 x 7.4 (567 x 366 x 188)	VC4303/180	20.95 x 13.00 x 7.10 (532 x 356 x 180)
CC6425	24 x 16 x 11 (610 x 406 x 279)	22.3 x 14.5 x 8.8 (567 x 366 x 224)	VC4303/180	20.95 x 13.00 x 7.10 (532 x 356 x 180)
CC6441	24 x 16 x 17 (610 x 406 x 279)	22.3 x 14.5 x 15.6 (567 x 366 x 396)	VC4303/300	20.95 x 13.00 x 11.81 (532 x 356 x 300)

\* Note: For one-size circuit boards; multiple-compartment configurations available for smaller, mixed circuit board dimensions

# static-safe work- benches

## Models WS70-72 & WS70-96

- Sturdy 14-gauge steel base with stainless steel apron rails
- Permanently static-dissipative laminate work surface
- Ground cable (6 gauge) for connection to building-ground system
- Adjustable table from standard desk height to standing bench height
- Built-in leveling pads

### Model WS70-72 and WS70-96

static-safe workbenches eliminate static build-up to protect ESD-sensitive components and circuit boards from costly damage during routine work operations. PSSI workbenches provide full ESD protection required for static-safe procedures of packing, testing, cleaning, repairing, and other routine maintenance of circuit boards. The two models differ only in bench top length. Replaceable work surface and optional top shelves are fabricated with a hard laminate surface material grounded to the workbench frame. A ground cable is provided for connection to the building ground system and eight ground-point receptacles are located around the workbench for wrist strap and equipment grounding. Table height is adjustable from standard desk height up to standing bench height. All corners of the bench top and top shelf are rounded for personnel safety. A wide variety of options are available to meet individual requirements for workspace, protective storage, and power needs.



*Model WS70-72 equipped with optional WSS15-96 top shelf, ASP12-21 adjustable stanchions, V4-17 storage compartments, WSD16-21 two-drawer storage module.*

*See page 19 for information on ESD protective seating.*

## Options

### Model WSD16-21 Two-Drawer Module

Two-drawer locking storage module for use with Model WS70-72 or WS70-96



### Model V4-17 Storage Compartment

Adjustable three-chamber compartment for storage of packaging materials

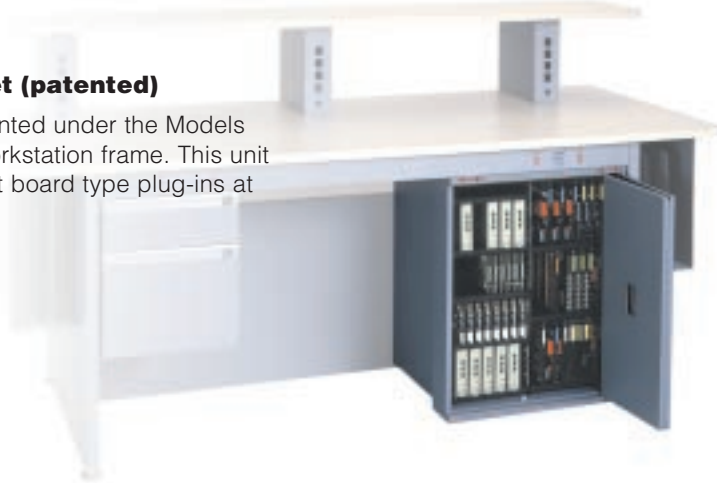


## Models WS70-72 & WS70-96 (continued)

### Options (continued)

#### Protected Mini-Cabinet (patented)

Model #30-22 can be mounted under the Models WS70-72 and WS70-96 workstation frame. This unit allows for storage of circuit board type plug-ins at the workstation location.



#### Static-Safe Top Shelving and Shelf Stanchions

Top shelving increases work surface of workbench approximately 42 percent. Top shelf is fabricated of the same permanently static-dissipative laminate as the bench top and is grounded to frame. Stanchions adjust in 1" (25.4 mm) increments from 12" (305 mm) to 21" (533 mm) and are available with 4 power outlets and circuit breaker (Model ASP12-21) or without power (Model AS12-21).



#### Available shelves are:

**Model WSS15-72:** 15" (381 mm) x 72" (1829 mm); requires 2 adjustable stanchions (for model WS70-72)

**Model WSS15-96:** 15" (381 mm) x 96" (2438 mm); requires 3 adjustable stanchions (for model WS70-96)

## Specifications

### Bench Top

Material:	Permanently static-dissipative laminate
Finish:	Almond
Width:	36" (914 mm)
Length:	72" (1829 mm) for Model WS70-72; 96" (2438 mm) for Model WS70-96
Height:	29" to 44" adjustable to chair, bench or standing height
Surface Resistivity:	$10^6 - 10^9$ ohms per square

### Base

Material:	14-gauge steel with stainless steel support rails
Finish:	Textured paint in fire-resistant blue, gray, or beige
Dimensions:	70" L x 34" D x 29" to 44" H, adjustable (1778 mm L x 862 mm D x 737 to 1118 mm H, adjustable)

### Base (continued)

**Grounding:** 6-gauge ground cable for connection to central ground system; 8 ground-point receptacles for personnel and equipment grounding

**Installation:** Fully adjustable table height; 4 leveling pads to compensate for uneven floors

#### Caster Option

(ASWW-4): Four, 4" (102 mm) by 1" (25 mm) locking anti-static casters with swivel and wheel locks

#### Other Available

**Options:** See illustrations and descriptions pages 17 and above.

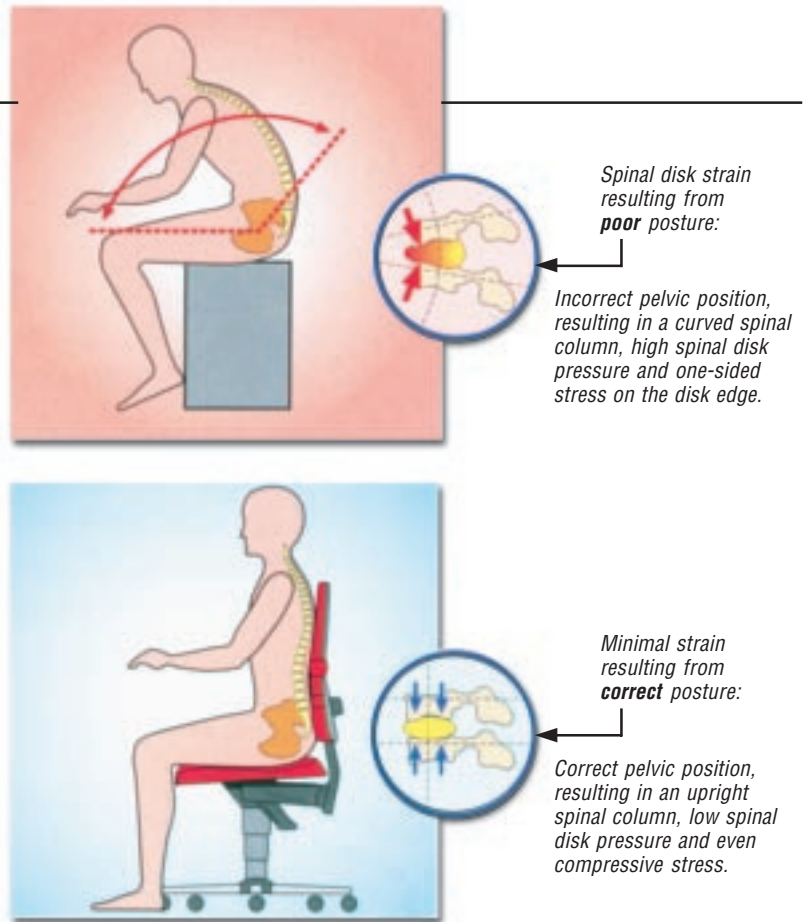


# technical seating for the workplace

## PSSI/bimos™

- Comfortable, ergonomic design for healthy posture
- Easy finger-touch seat height and backrest adjustability
- Highest quality components to endure many years of multi-shift use
- Durable fabric or smooth leather-like upholstery
- Stable, five-point base with durable casters or glides

PSSI provides a wide range of **bimos™ seating** products for practically every conceivable workplace application from standing rests for a workbench, to swivel chairs for assembly lines, and for strict cleanroom environments.



## The Proper Prevention

A chair designed to the correct ergonomic standards not only promotes better safety, health and comfort in the workplace, it improves concentration and productivity.

### Movement Provides Protection

The nature of most jobs increasingly confines us to our workspace and reduces our scope of movement. The ergonomically designed adjustment functions of the **bimos** industrial swivel chairs promote dynamic sitting, counteracting the negative effects of a "one-design-fits-all" fixed seating position. This reduces unhealthy, uneven stress on muscles and spinal disks. Body movement stimulates the supporting muscle system, improves circulation and the nutrient supply. The benefits are improved concentration, efficiency and productivity.

### 40% Less Strain

The ergonomic design of the **bimos** seat and backrest guarantee the right angle of pelvic tilt in any seat position. This aligns and supports the spinal column to its natural self-stabilizing, S-shape. The **bimos** ergonomic design helps in preventing rounded backs, incorrect posture, and reduces compressive strain on the spinal disks by approximately 40%.

### Healthy Sitting Pays Dividends

**bimos** industrial chairs are designed to accepted ergonomic standards that not only promote better health and wellbeing, they pay for themselves. The cost of a single sick day resulting from lower back pain can be more than twice the cost of a new **bimos** swivel chair.

# technical seating for the workplace

## bimos™ — (continued)



**Model 9375:** Seat height adjustable from 18" (470 mm) to 25" (650 mm); conductive dual-wheel casters with load reactive locks for additional safety.



**Model 9387:** Seat height adjustable from 25" (630 mm) to 35" (690 mm); conductive, wear-resistant gliders; footstep included.

### bimos™ Laboratory and Inspection Area Seating

These ESD-protected chairs feature thick, padded, conductive upholstery, constant-contact backrest, adjustable seat height and backrest, and very stable five-point bases. Static charges are dissipated at a controlled rate via a one-megohm resistor. High backrest, armrests, footstep, and conductive glides are available options.



**Model 9811** with contact backrest and seat tilt adjustment, mounting step, glides, and optional integral foam upholstery in blue. The mounting step moves when adjusting seat height and swiveling, and folds-up when not required.



**Model 9810** with contact backrest and seat tilt adjustment, glides, and optional red textile upholstery and multifunction armrests

### bimos™ Industrial Seating

#### bimos™ Sintec

For the workplace environment. Depending upon the application, all Sintec industrial chairs can be equipped with comfortable textile or very durable integral foam upholstery (optional). Sintec chairs also have a static-dissipative option for ESD protection.



*Model 9183 Cleanroom chair —  
Seat height adjustment range:  
25-35" (630-890 mm). Stable five  
star point with conductive plastic  
gliders.*

*Model 9161 Cleanroom chair —  
Seat height adjustment range:  
17"-22" (440-565mm); backrest  
height 19" (500mm); conductive  
dual-wheeled casters with load-  
sensitive brakes.*

### **bimos™ Cleanroom Seating**

"Superior comfort that meets strict cleanroom standards."

**bimos™** special anatomically formed padding is bonded to the slip-resistant conductive leather-like upholstery for optimum comfort, safety and ESD protection in critical cleanroom environments. The **bimos** cleanroom seating meets U.S.Fed. Std. 209D standards. They are specifically designed and constructed of materials that do not out-gas, generate or shed particles.

Additional option-features, such as Syncro-Automatic adjustability, are available on some of the 18 cleanroom chair models from which to select a **bimos** swivel chair that meets your specific needs.



## **Plug-In Storage® Systems has a complete line of static control accessories**

<b>Static control accessory products</b>	<b>Applications</b>
Personnel grounding	Wrist straps (fabric and metal), Foot grounders
Matting (anti-static)	Workstations, Benches and tables, Floor runners
Bags, bubble wrap, foam	Anti-static packaging; shipping/impact protection
Signs, labels and tape	ESD awareness for workstations, packaging
Test and monitor instruments	Wrist and foot straps, Equipment ground connections, Static locator, Static field meter
Ionization generating equipment	Workbench, Static balance control



**Plug-In Storage® Systems, Inc.**

P.O. Box 928, Orange, CT 06477-0928

Phone: 203-799-8077 ▪ 800-231-5952 ▪ FAX: 800-532-2999 ▪ e-mail: [info@pluginstorage.com](mailto:info@pluginstorage.com) ▪ Internet: [www.pluginstorage.com](http://www.pluginstorage.com)

Printed In U.S.A.

11/99 15m